

Excavator Breaker

ATTACHMENT



From the builders of the ORIGINAL Montana Post Driver

The Montana Breaker is designed and engineered to provide reliable breaking power with the convenience of excavator attachment. Built with the same hammer as our reputable Montana Post Driver, you can rely on the breaker to provide years of service. Break through rock, concrete or any hard material with our breaker.

Combining high operation efficiency and nitrogen gas energy for powerful breaking force.

Impressive Impact Power

Precision machining process standards and unique quality control methods is the core competitiveness of these powerful breakers.

Low Recoil

After research, we've created a design that minimizes recoil movements that increase operational safety.

Fewer Components - More Reliability

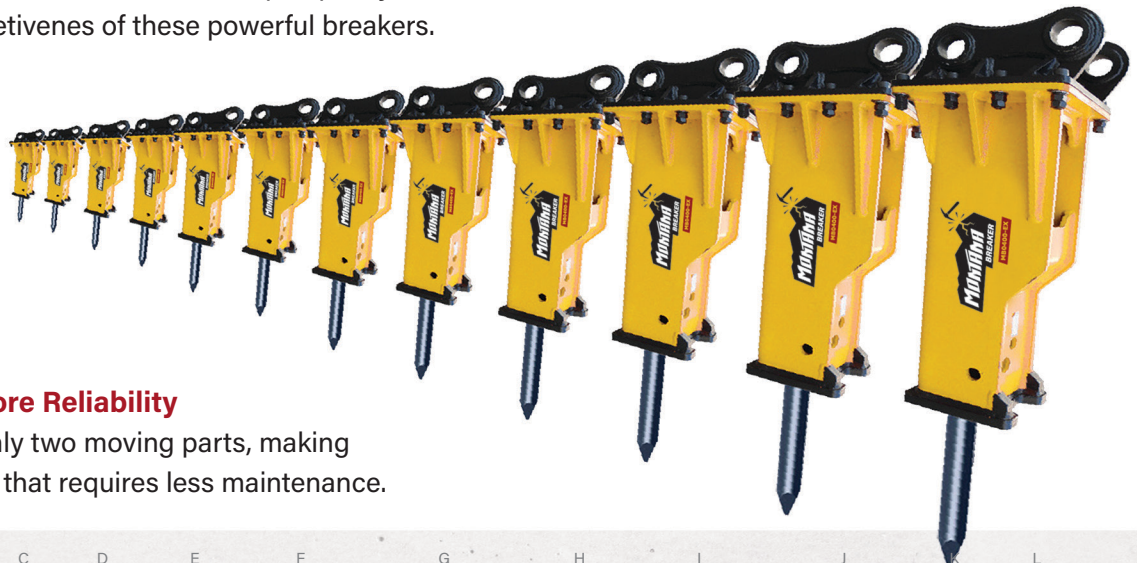
The power cell contains only two moving parts, making for a more reliable breaker that requires less maintenance.

Noise Reduction Technology

The extra attention given to building specially-shaped components and shell construction minimize noise pollution.

Built for Strength

With gussets on the side of the housing, along with a unique 'rock claw' shaping lower down, Montana breakers are built to last.



	A	B	C	D	E	F	G	H	I	J	K	L
Model*	Concrete Point	Nitrogen Bottle	Nitrogen Charge Kit	Hydraulic Hoses	Price**	Working Weight	Machine Weight Requirements	Oil Flow	Operating Pressure	Blow Rate	Shaft Diameter	Energy Class
MB0300-EX	✓	✓	✓	✓	\$5,000	225	1,700-5,000 lb	4-8	1300-1700	800-1400	1.60"	230
MB0350-EX	✓	✓	✓	✓	\$5,400	287	2,600-6,000 lb	5-11	1300-1700	700-1200	1.80"	290
MB0400-EX	✓	✓	✓	✓	\$5,600	331	5,000-10,000 lb	7-13	1300-1800	600-1100	2.10"	320
MB0750-EX	✓	✓	✓	✓	\$8,250	661	8,000-14,000 lb	11-18	1550-2000	500-900	2.70"	690
MB1000-EX	✓	✓	✓	✓	\$10,800	882	12,000-18,000 lb	13-24	1700-2100	400-800	3.00"	900
MB1500-EX	✓	✓	✓	✓	\$16,600	1543	14,000-28,000 lb	16-26	1800-2200	400-800	3.35"	1300
MB2000-EX	✓	✓	✓	✓	\$19,800	1764	21,000-35,000 lb	21-29	2130-2400	350-700	3.94"	2100
MB3000-EX	✓	✓	✓	✓	\$29,700	3020	35,000-50,000 lb	26-40	2130-2450	350-600	5.31"	3000
MB4000-EX	✓	✓	✓	✓	\$39,600	3527	45,000-60,000 lb	32-48	2270-2550	350-500	5.51"	4270
MB5000-EX	✓	✓	✓	✓	\$52,200	4850	60,000-77,000 lb	48-63	2270-2550	300-450	6.10"	7100
MB6000-EX	✓	✓	✓	✓	\$55,000	6845	70,000-90,000 lb	53-69	2270-2550	250-400	6.50"	10000

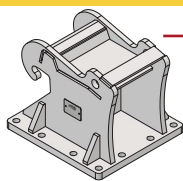
*Colors indicate which models have the same size top plate.

**Price includes standard excavator mount.

MOUNTS IN STOCK

Excavator Breaker

Metric ÷ 25.4 = English
Ex: 45mm ÷ 25.4 = 1.77 in.



X-Change

Bobcat Mounts

HMQ 100-A,B	X-Change E10, 20, 32, 35, 42, 50, 60, 88, 145, 165, 325, 328, 331, 341, 435
HMP 123-A,B	E80/85
HMP 123R-A,B	E85R

CAT Mounts

HMP 044-A,B	303/303.5/304
HMP 100-B	304/305
HMP 034-B	305CR/305.5/306
HMP 127-B	307C/308/308C
HMP 098-B,C	307D/308D/308E
HMP 049-C,D	311
HMP 058-C	420 (Backhoe)

John Deere Mounts

HMQ 011-A,B	27/35 Quick Attach
HMQ 019-B	50/60 Quick Attach
HMP 027-B	75/85 Pin
HMP 066-B,C	310/410 (Backhoe)

Kubota Mounts

HMQ 001-A	U25/U27
HMQ 002-A,B	KX40/41/91/121/U35 Quick Attach
HMQ 006-B	KX161/U45 Quick Attach
HMQ 010-B	KX057/U55 Quick Attach
HMQ 008-B,C	KX080 Quick Attach
HMP 008-B,C	KX080 Pin

Komatsu Mounts

HMP 026-B	35
HMP 028-B	40/50
HMP 027-B	60/75/78/80/88/90/95
HMP 069-B,C	100/120/128/138

Wain-Roy Mounts

W27-A,B	HMW27 1-1/4"
W30-B,C	HMW30 1-3/4"

More Mounts

HMP 141-B	Dosan DX63
HMP 101-B,C	Case 580-L-K-M
HMP 044-A,B	Case CX37/New Holland E37
HMP 8040-B	JCB 8040
HMP 033-B,C	Takeuchi 175W/180FR/280/290
HMP 148-B	Takeuchi TD260
HMP 102-B	Volvo ER45/50/58
HMP 039-A,B	Yanmar VOI 27, 35/Gehl Z27,35/Mustang 350Z
HMP 118-B	Yanmar VOI 40, 45, 50, 55/Mustang 450A

Weight	Pin A & A2		Gap B & B2		Center Line		Price
	(mm)	(in)	(mm)	(in)	(mm)	(in)	
	-	-	-	-	-	-	\$1,650
	45	1.772	200	7.874	291	11.457	\$1,650
	55	2.165	200	7.874	291	11.457	\$1,650

	40	1.575	135	5.315	200	7.874	\$1,650
	40	1.575	156	6.142	260	10.236	\$1,650
	45	1.772	156	6.142	260	10.236	\$1,650
	45	1.772	186	7.323	306	12.047	\$1,650
	50	1.969	200	7.874	306	12.047	\$1,650
	65	2.559	222	8.740	407	16.024	\$1,650
	45/50	1.772/1.969	206/256	8.110/10.079	345	13.583	\$1,650

	-	-	-	-	-	-	\$1,650
	-	-	-	-	-	-	\$1,650
	50	1.969	200	7.874	310	12.205	\$1,650
	54.61/49.53	2.150/1.950	207	8.150	304	11.969	\$1,650

	-	-	-	-	-	-	\$1,650
	-	-	-	-	-	-	\$1,650
	-	-	-	-	-	-	\$1,650
	-	-	-	-	-	-	\$1,650
	-	-	-	-	-	-	\$1,650
	60	2.362	204	8.031	296	11.654	\$1,650

	35	1.378	145	5.709	194	7.638	\$1,650
	45	1.772	170	6.692	230	9.055	\$1,650
	50	1.969	200	7.874	310	12.205	\$1,650
	60	2.362	260	10.236	374	14.724	\$1,650

	-	-	-	-	-	-	\$1,650
	-	-	-	-	-	-	\$1,650

	45	1.772	155	6.102	260	10.236	\$1,650
	44.5	1.752	254	10.000	354	13.937	\$1,650
	40	1.574	135	5.314	200	7.874	\$1,650
	40	1.575	159	6.260	343	13.504	\$1,650
	50	1.969	165	6.496	292	11.496	\$1,650
	45	1.772	166	6.535	248.5	9.783	\$1,650
	40	1.575	160	6.299	220	8.661	\$1,650
	37.8	1.488	142	5.591	213	8.386	\$1,650
	45	1.772	165	6.496	270	10.630	\$1,650

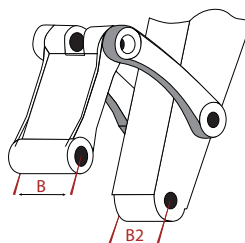
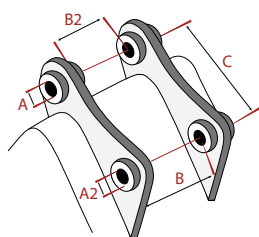
Mount	Breaker Model
A	MB300, MB350, MB400
B	MB750, MB1000
C	MB1500

How to Measure

A/A2: Pin

B/B2: Gap

C: Center Line



www.montanabreaker.com
THIS IS A MONTANA POST DRIVER COMPANY